



HSIEH HSIN
PNEUMATIC CO., LTD.



www.hhp96tw.com

ABOUT HHP

Hsieh Hsin Pneumatic Co., Ltd. (HHP) is founded in 1996 at New Taipei, Taiwan, as a professional Air Tools' OEM and ODM for over more than two decades. With numerous manufacturing and service experience, we provide many high-quality air tools to the global markets, such as air hydraulic riveter, air hammer, air needle scaler, air caulking gun, etc.

Our motto is "Make Air Tools Like Air", with this passion for innovation, our R&D team made air tools not only compact and lightweight for users but also working stronger and powerful. If you are looking for OEM and ODM in Taiwan, we have confidence that we are your best choice!

Exploring our more products and information, we welcome you to visit our website "www.hhp96tw.com". HHP is always hearing your voice to meet your needs!





HSIEH HSIN PNEUMATIC CO., LTD.

Make Air Tools Like Air!



www.hhp96tw.com



THE PROFESSIONAL AIR TOOL OEM&ODM OF TAIWAN



www.hhp96tw.com

AIR HYDRAULIC RIVETER

Classic Series

HT-9600



HT-9601



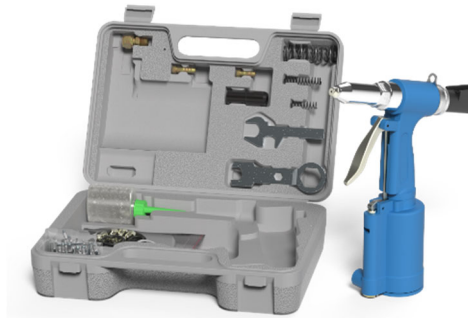
HT-9602



HT-9603



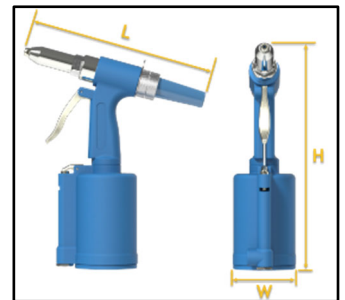
HT-9600K



HT-9601K



Rubber grip cover is also optional for all models.



SPEC

Single

Content: Air Hydraulic Riveter, Nose Pieces, Spanners

Kit Set

Content: Air Hydraulic Riveter, Repair Kit, Rivets, Oiler, Blow Case

Model	Capacity of Rivet Diameter (ϕ)		Traction Power		Stroke	Air Consumption	Net Weight		Dimension (L*H*W)	Packing
	mm	in	kgf	lbf			kg	lb		
HT-9600	2.4~4.0	3/32~5/32	497	1095	13	0.73	1.22	2.68	251*258*60	10/CTN/14/15/1.45'
HT-9601	2.4~4.8	3/32~3/16	974	2146	16	1.64	1.45	3.19	233*275*79	10/CTN/17/18/1.9'
HT-9602	2.4~4.8	3/32~3/16	1030	2271	16	1.73	1.51	3.32	233*337*72	10/CTN/18/19/2.0'
HT-9603	4.8~6.4	3/16~1/4	1502	3311	16	2.53	1.78	3.92	245*288*91	10/CTN/23/24/2.3'
HT-9600K	2.4~4.0	3/32~5/32	497	1095	13	0.73	1.22	2.68	251*258*60	8/CTN/20/21/2.3'
HT-9601K	2.4~4.8	3/32~3/16	974	2146	16	1.64	1.45	3.19	233*275*79	8/CTN/22/23/2.3'
HT-9602K*	2.4~4.8	3/32~3/16	1030	2271	16	1.73	1.51	3.32	233*337*72	10/CTN/20/21/2.0'
HT-9603K*	4.8~6.4	3/16~1/4	1502	3311	16	2.53	1.78	3.92	245*288*91	10/CTN/25/26/2.3'

Operated at air pressure 6.3 kgf/cm² (90 psi), air inlet size: 1/4" NPT/PT, air hose size: 3/8" I.D. *Kit set with kraft paper box.

AIR HYDRAULIC RIVETER

Classic Vacuum Series

Features:

- Ergonomic grip cover
- Vacuum system with air regulator or switch
- Vibration reduced design for operator
- Long/Short trigger is optional
- 2 or 3 jaws are optional
- Longer stroke compares to classic series



Scan for Video

HT-9604-V



HT-9605-V



HT-9606-V



SPEC

Model	Capacity of Rivet Diameter (φ)		Traction Power		Stroke	Vacuum	Air Consumption	Net Weight		Dimension (L*H*W)	Packing
	mm	in	kgf	lbf				kg	lb		
HT-9604-V	2.4~4.0	3/32~5/32	497	1095	14	O	0.74	1.12	2.47	260*257*81.5	10/CTN/14/15/2.5'
HT-9604	2.4~4.0	3/32~5/32	497	1095	14	X	0.74	1.1	2.42	260*257*60	10/CTN/14/15/2.5'
HT-9605-V	2.4~4.8	3/32~3/16	974	2146	17	O*	1.74	1.47	3.24	260*273*79	10/CTN/17/18/2.5'
HT-9605	2.4~4.8	3/32~3/16	974	2146	17	X	1.74	1.45	3.19	260*273*79	10/CTN/17/18/2.5'
HT-9606-V	2.4~4.8	3/32~3/16	1030	2271	17	O	1.75	1.42	3.13	260*308*88	10/CTN/17/18/2.5'
HT-9606	2.4~4.8	3/32~3/16	1030	2271	17	X	1.75	1.4	3.08	260*308*72	10/CTN/17/18/2.5'
HT-9605-VK	2.4~4.8	3/32~3/16	974	2146	17	O*	1.74	1.47	3.24	260*273*79	8/CTN/21/22/2.3'
HT-9605K	2.4~4.8	3/32~3/16	974	2146	17	X	1.74	1.45	3.19	260*273*79	8/CTN/21/22/2.3'

Operated at air pressure 6.3 kgf/cm² (90 psi), air inlet size: 1/4" NPT/PT, air hose size: 3/8" I.D. *With air regulator.

AIR HYDRAULIC RIVETER

Rocket Style Series

Features:

- Ultra-lightweight only 1.0 kg
- Powerful traction force with long stroke
- Ergonomic grip cover & streamline rocket shape
- Vacuum system with air switch
- Vibration reduced design for operator
- Button-type trigger design
- 2 or 3 jaws are optional
- Suitable for all material rivets
- Equip with swivel air inlet



Scan for Video

HT-96RS1



SPEC

Model	Capacity of Rivet Diameter (ϕ)		Traction Power		Stroke	Vacuum	Air Consumption	Net Weight		Dimension (L*H*W)	Packing
	mm	in	kgf	lbf				kg	lb		
HT-96RS1	2.4~4.8	3/32~3/16	1011	2230	19	O	2.03	1.0	2.2	284*265*77	10/CTN/14/15/2.5'
HT-96RS1-NV	2.4~4.8	3/32~3/16	1011	2230	19	X	2.03	1.0	2.2	284*265*77	10/CTN/14/15/2.5'

Operated at air pressure 6.3 kgf/cm² (90 psi), air inlet size: 1/4" NPT/PT, air hose size: 3/8" I.D.

BLIND RIVET

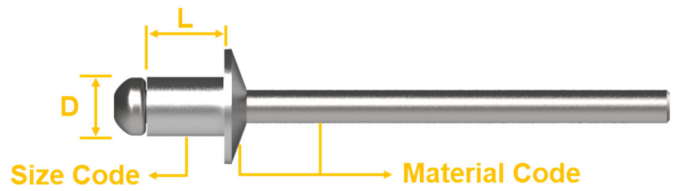
Product Coding System

AS

①

62

②



① Material Code: See Table Material Code (*AS: Aluminum sleeve and steel mandrel).

② Size Code: See the appropriate specification table.

Material Code

Code	AA	AS	SS	CS	CC
Sleeve Material	Aluminum	Aluminum	Steel	Stainless Steel	Stainless Steel
Mandrel Material	Aluminum	Steel	Steel	Steel	Steel

Specification Table

Size Code	Sleeve Diameter D		Sleeve Length L		Recommended Fastening Range mm
	mm	in	mm	in	
31	2.4	3/32	5.5	7/32	0.5 ~ 3.2
32			8.0	5/16	3.2 ~ 5.0
33			9.0	11/32	5.0 ~ 7.2
41	3.2	1/8	6.0	7/32	0.5 ~ 3.0
42			8.0	5/16	3.0 ~ 3.8
43			9.0	11/32	3.8 ~ 5.0
44			10.0	3/8	5.0 ~ 6.5
45			12.0	15/32	6.5 ~ 8.5
46			12.7	1/2	8.5 ~ 9.6
47			14.0	9/16	9.6 ~ 10.5
48			16.0	5/8	10.5 ~ 13.0
49			19.0	3/4	13.0 ~ 16.0
51	4.0	5/32	6.0	7/32	0.5 ~ 3.0
52			8.0	5/16	3.0 ~ 4.2
53			10.0	3/8	4.2 ~ 6.2
54			11.0	7/16	6.2 ~ 8.2
55			12.7	1/2	8.2 ~ 9.5
56			14.0	9/16	9.5 ~ 11.0
57			16.0	5/8	11.0 ~ 12.5
58			17.5	11/16	12.5 ~ 15.0
59			19.0	3/4	15.0 ~ 17.0
61	4.8	3/16	6.4	1/4	0.5 ~ 3.2
62			8.0	5/16	3.2 ~ 4.2
63			10.0	3/8	4.2 ~ 6.2
64			12.7	1/2	6.2 ~ 9.5
65			16.0	5/8	9.5 ~ 12.5
66			19.0	3/4	12.5 ~ 16.5
67			22.2	7/8	16.5 ~ 18.0
68			25.4	1	18.0 ~ 22.2
83			6.4	1/4	10
84	12.7	1/2			6.0 ~ 9.0
85	16.0	5/8			9.0 ~ 12.0
86	19.0	3/4			12.0 ~ 15.0

AIR HAMMER

Uni Series

HT-9615/R(H)



HT-9619/R(H)



HT-9621/R(H)



HT-9625/R(H)



HT-9615/4R(H)



HT-9619/4R(H)



HT-9621/4R(H)



HT-9625/4R(H)



HT-9615K/SR(H)



HT-9615K/LR(H)



HT-9619K/SR(H)



HT-9619K/LR(H)



HT-9621K/SR(H)



HT-9621K/LR(H)



HT-9625K/SR(H)



HT-9625K/LR(H)



HT-9615NK/SR(H)



HT-9619NK/SR(H)



HT-9621NK/SR(H)



AIR HAMMER

Deluxe Series

HT-9615D/R(H)



HT-9619D/R(H)



HT-9621D/R(H)



HT-9625D/R(H)



HT-9615D/4R(H)



HT-9619D/4R(H)



HT-9621D/4R(H)



HT-9625D/4R(H)



HT-9615DK/SR(H)



HT-9615DK/LR(H)



HT-9619DK/SR(H)



HT-9619DK/LR(H)



HT-9621DK/SR(H)



HT-9621DK/LR(H)



HT-9625DK/SR(H)



HT-9625DK/LR(H)



HT-9615DNK/SR(H)



HT-9619DNK/SR(H)



HT-9621DNK/SR(H)



AIR HAMMER

Civic Series

HT-9619C/R(H)



HT-9621C/R(H)



HT-9625C/R(H)



HT-9619C/4R(H)



HT-9621C/4R(H)



HT-9625C/4R(H)



HT-9619CK/SR(H)



HT-9619CK/LR(H)



HT-9621CK/SR(H)



HT-9621CK/LR(H)



HT-9625CK/SR(H)



HT-9625CK/LR(H)



HT-9619CNK/SR(H)



HT-9621CNK/SR(H)



AIR HAMMER

Iron Series

Features:

- Cast iron handle especially for higher air pressure (100~120 psi)
- Durable and powerful

HT-9625i/R(H)



HT-9625i/5R(H)



HT-9625iK/LR(H)



SPEC

Single

Content: Air Hammer & Retaining Spring

Model	Chisel Shank [inch]		Bore Diameter (I.D.) mm	Stroke mm	Blow per Min. BPM	Air Consumption		Net Weight		Packing PCS/CTN/NW/GW/CUFT
	Round	Hex				LPM	CFM	kg	lb	
HT-9615/R(H)	0.401	0.41	19	41	4500	142	5.0	1.10	2.42	10/CTN/12/13/0.95'
HT-9615D/R(H)	0.401	0.41	19	41	4500	142	5.0	1.18	2.60	10/CTN/13/14/0.95'
HT-9619/R(H)	0.401	0.41	19	66	3000	156	5.5	1.42	3.13	10/CTN/15.5/16.5/0.95'
HT-9619D/R(H)	0.401	0.41	19	66	3000	156	5.5	1.54	3.39	10/CTN/16.5/17.5/0.95'
HT-9619C/R(H)	0.401	0.41	19	66	3000	156	5.5	1.68	3.70	10/CTN/18/19/0.95'
HT-9621/R(H)	0.401	0.41	19	86	2500	164	5.8	1.57	3.46	10/CTN/17/18/0.95'
HT-9621D/R(H)	0.401	0.41	19	86	2500	164	5.8	1.69	3.72	10/CTN/18/19/0.95'
HT-9621C/R(H)	0.401	0.41	19	86	2500	164	5.8	1.83	4.03	10/CTN/19.5/20.5/0.95'
HT-9625/R(H)	0.401	0.41	19	92	2200	170	6.0	1.81	3.99	10/CTN/19/20/1.25'
HT-9625D/R(H)	0.401	0.41	19	92	2200	170	6.0	1.93	4.25	10/CTN/20/21/1.25'
HT-9625C/R(H)	0.401	0.41	19	92	2200	170	6.0	2.07	4.56	10/CTN/22/23/1.25'
HT-9625i/R(H)	0.401	0.41	19	92	2200	170	6.0	3.15	6.94	8/CTN/27/28/1.1'

Operated air pressure at 6.3kgf/cm² (90psi), air inlet size: 1/4"NPT/PT, air hose size: 3/8" I.D. R: Round Chisel, H: Hex Chisel

AIR HAMMER

SPEC

Single with Chisels

Content: Air Hammer, Retaining Spring & Chisels

Model	Net Weight		Packing
	kg	lb	
HT-9615/4R(H)	1.49	3.28	10/CTN/16/17/0.95'
HT-9615D/4R(H)	1.57	3.46	10/CTN/17/18/0.95'
HT-9619/4R(H)	1.81	3.99	10/CTN/19.5/20.5/0.95'
HT-9619D/4R(H)	1.93	4.25	10/CTN/20.5/21.5/0.95'
HT-9619C/4R(H)	2.07	4.56	10/CTN/22/23/0.95'
HT-9621/4R(H)	1.96	4.32	10/CTN/21/22/0.95'
HT-9621D/4R(H)	2.08	4.58	10/CTN/22.5/23.5/0.95'
HT-9621C/4R(H)	2.22	4.89	10/CTN/23.5/24.5/0.95'
HT-9625/4R(H)	2.20	4.85	10/CTN/23.5/24.5/1.25'
HT-9625D/4R(H)	2.32	5.11	10/CTN/24.5/25.5/1.25'
HT-9625C/4R(H)	2.46	5.42	10/CTN/26/27/1.25'
HT-9625i/5R(H)	3.85	8.48	8/CTN/32/33/1.1'

4: With 4 pieces short 5" chisel, 5: With 5 pieces long 7" chisel

K Set

Content: Air Hammer, Retaining Spring, 1/4" Mini Oiler, Asian/European/American Air Coupler, Chisels & Blow Case

Model	Net Weight		Packing
	kg	lb	
HT-9615K/SR(H)	2.20	4.85	10/CTN/22/23/1.5'
HT-9615K/LR(H)	2.40	5.29	10/CTN/24/25/1.5'
HT-9615DK/SR(H)	2.28	5.02	10/CTN/23/24/1.5'
HT-9615DK/LR(H)	2.48	5.46	10/CTN/25/26/1.5'
HT-9619K/SR(H)	2.52	5.55	10/CTN/25.5/26.5/1.5'
HT-9619K/LR(H)	2.72	5.99	10/CTN/27.5/28.5/1.5'
HT-9619DK/SR(H)	2.65	5.84	10/CTN/26.5/27.5/1.5'
HT-9619DK/LR(H)	2.85	6.28	10/CTN/28.5/29.5/1.5'
HT-9619CK/SR(H)	2.79	6.15	8/CTN/22.5/23.5/1.5'
HT-9619CK/LR(H)	2.99	6.59	8/CTN/24/25/1.5'
HT-9621K/SR(H)	2.67	5.88	8/CTN/21.5/22.5/1.5'
HT-9621K/LR(H)	2.87	6.32	8/CTN/23/24/1.5'
HT-9621DK/SR(H)	2.80	6.17	8/CTN/22.5/23.5/1.5'
HT-9621DK/LR(H)	3.00	6.61	8/CTN/24.5/25.5/1.5'
HT-9621CK/SR(H)	2.93	6.45	8/CTN/23.5/24.5/1.5'
HT-9621CK/LR(H)	3.13	6.90	8/CTN/25/26/1.5'
HT-9625K/SR(H)	2.93	6.45	8/CTN/23.5/24.5/1.7'
HT-9625K/LR(H)	3.13	6.90	8/CTN/25/26/1.7'
HT-9625DK/SR(H)	3.05	6.72	8/CTN/24.5/25.5/1.7'
HT-9625DK/LR(H)	3.25	7.16	8/CTN/26/27/1.7'
HT-9625CK/SR(H)	3.19	7.03	8/CTN/25.5/26.5/1.7'
HT-9625CK/LR(H)	3.39	7.47	8/CTN/27.5/28.5/1.7'
HT-9625iK/LR(H)	4.44	9.78	6/CTN/28/29/1.4'

S: short 5" chisel, L: long 7" chisel

NK Set

Content: Air Hammer, Retaining Spring, Needle Scaler Attachment, Asian/European/American Air Coupler, Chisels & Blow Case

Model	Net Weight		Packing
	kg	lb	
HT-9615NK/SR(H)	2.91	6.41	8/CTN/23.5/24.5/1.5'
HT-9615DNK/SR(H)	2.99	6.59	8/CTN/24/25/1.5'
HT-9619NK/SR(H)	3.23	7.12	8/CTN/26/27/1.5'
HT-9619DNK/SR(H)	3.35	7.38	8/CTN/27/28/1.5'
HT-9619CNK/SR(H)	3.49	7.69	8/CTN/28/29/1.5'
HT-9621NK/SR(H)	3.38	7.45	8/CTN/27/28/1.5'
HT-9621DNK/SR(H)	3.50	7.71	8/CTN/28/29/1.5'
HT-9621CNK/SR(H)	3.64	8.02	8/CTN/29.5/30.5/1.5'

AIR NEEDLE SCALER & ATTACHMENT

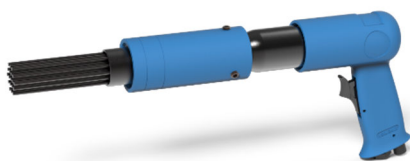
HT-9613/R(H) [HT-9615 + HT-9611]



HT-9613D/R(H) [HT-9615D + HT-9611]



HT-9614/R(H) [HT-9619 + HT-9611]



HT-9614D/R(H) [HT-9619D + HT-9611]



HT-96NS1



HT-9611/R(H)

Directly apply for Air Hammer from HT-9615 to HT-9625C



HT-9611A/R(H)

For Air Hammer equip with Quick Change Retainer (AH-6)



SPEC

Model	Needle Size	Amount of Needles	Overall Length mm	Net Weight		Packing PCS/CTN/NW/GW/CUFT
	mm			kg	lb	
HT-9611	φ 3*180	19	228	0.92	2.02	20/CTN/18.5/19.5/0.65'
HT-9611A	φ 3*180	19	270	0.93	2.05	20/CTN/18.5/19.5/1.0'
HT-9613	φ 3*180	19	346	1.97	4.34	10/CTN/20/21/0.95'
HT-9613D	φ 3*180	19	350	2.05	4.51	10/CTN/21/22/0.95'
HT-9614	φ 3*180	19	383	2.28	5.02	10/CTN/23/24/0.95'
HT-9614D	φ 3*180	19	382	2.41	5.31	10/CTN/24.5/25.5/0.95'
HT-96NS1	φ 3*125	12	295	1.30	2.86	12/CTN/15/16/4/0.6'

AIR FLUX CHIPPING HAMMER

HT-96FC1



HT-96FC2



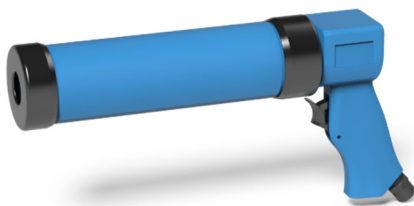
SPEC

Model	Bore Diameter (I.D.)	Stroke	Blow per Min.	Air Consumption		Net Weight		Overall Length	Packing
	mm	mm	BPM	LPM	CFM	kg	lb	mm	PCS/CTN/NW/GW/CUFT
HT-96FC1	18	28	4800	57	2.0	1.04	2.29	235	12/CTN/12.5/13.5/0.6'
HT-96FC2	22	32	5000	48	1.7	1.37	3.01	295	12/CTN/16.5/17.5/0.85'

AIR CAULKING GUN

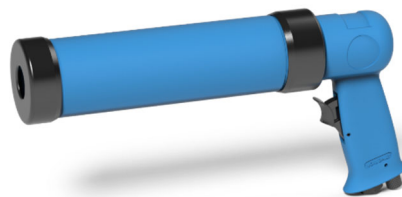
HT-9680

Metal Body



HT-9680A

Metal Body



HT-9681

Plastic Body



SPEC

Model	Operated Air Pressure		Tube Size		Overall Length	Net Weight		Packing
	kgf/cm ²	psi	mm	in	mm	kg	lb	PCS/CTN/NW/GW/CUFT
HT-9680	2.1~6.3	30~90	φ 51*216	φ 2*8-1/2	320	1.00	2.20	10/CTN/11/12/1.45'
HT-9680A	2.1~6.3	30~90	φ 51*216	φ 2*8-1/2	300	0.96	2.11	10/CTN/10.5/11.5/1.45'
HT-9681	2.1~6.3	30~90	φ 51*216	φ 2*8-1/2	230	0.21	0.46	10/CTN/3/4/1.45'

ACCESSORY

Optional Parts for Air Tools

AH-1

Retaining Spring
W.D.: ϕ 3.2 mm



AH-2

Beehive Retaining Spring
W.D.: ϕ 3.2 mm



AH-3

Zip Change Retaining Spring
W.D.: ϕ 3.2 mm



AH-4

Retaining Spring
W.D.: ϕ 4.5 mm



AH-5

Beehive Retaining Spring
W.D.: ϕ 4.5 mm



AH-6

Quick Change Retainer



AH-7

Hitch Cutter Retainer Chuck



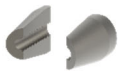
AO-1

1/4" Mini Oiler



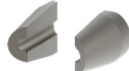
JAWS [2pcs]

ϕ 4 x L 8 mm



JAWS [2pcs]

ϕ 5 x L 10 mm



JAWS [3pcs]

ϕ 5 x L 10 mm



JAWS [2pcs]

ϕ 6 x L 12 mm



AC-1

Asian Air Coupler



AC-2

European Air Coupler



AC-3

American Air Coupler



ACV-1

Air Flow Control Valve



AH-1004/R(H)

4 pcs 5" (125 mm)
Round/Hex Chisels



AH-1005/R(H)

5 pcs 5" (125 mm)
Round/Hex Chisels



AH-1006/R(H)

6 pcs 5" (125 mm)
Round/Hex Chisels



AH-1007/R(H)

5 pcs 7" (175 mm)
Round/Hex Chisels



HT-96NS1-16

Needle Set (12 pcs/SET)
L : 125 mm



HT-9611-06

Needle Set (19 pcs/SET)
L : 180 mm



HSIEH HSIN

PNEUMATIC CO., LTD.



協薪有限公司

新北市土城區中央路三段 4 之 8 號

- A** No.4-8, Sec. 3, Zhongyang Rd., Tucheng Dist., New Taipei City 236, TAIWAN
- T** 886-2-2268-4311 886-2-2268-4319
- F** 886-2-2268-4303
- W** www.hhp96tw.com
- E** hhp96@outlook.com



Copyright © 2020 Hsieh Hsin Pneumatic Co., Ltd. All Right Reserved. 2020 V1.0